

“博诺杯”移动机器人竞赛平台

LabVIEW 专业版安装教程

(BNRT-MOB-44)



=



天津博诺智创机器人技术有限公司

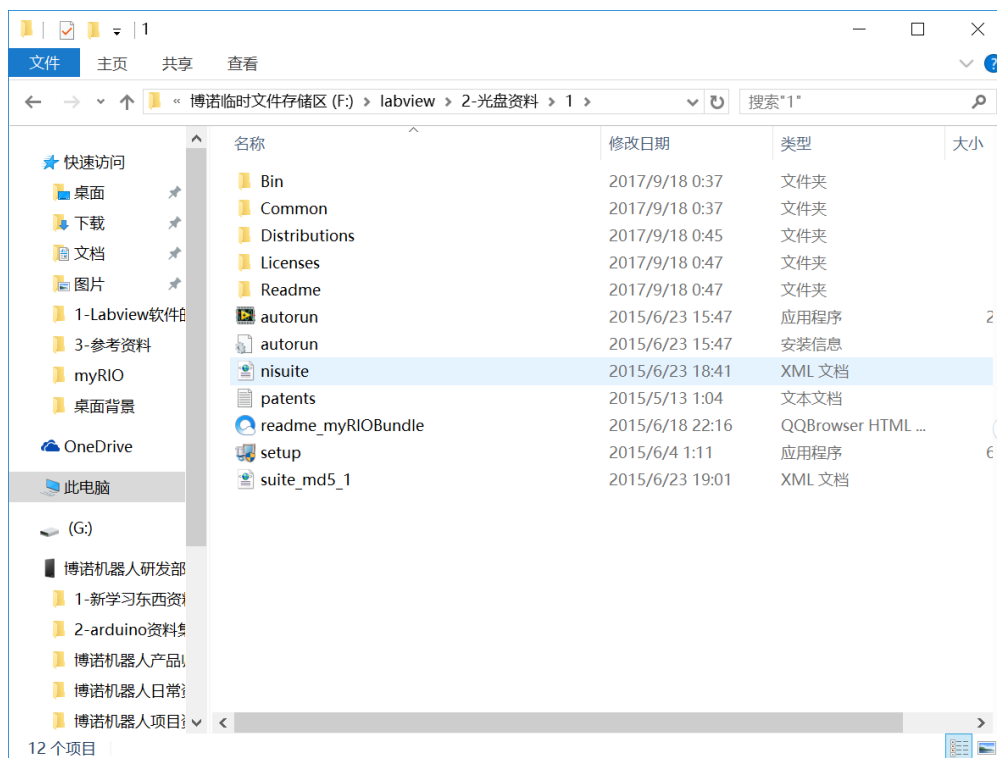
Tianjin Bonuo Intelligent Creative Robotics Technology Co., Ltd.

目录

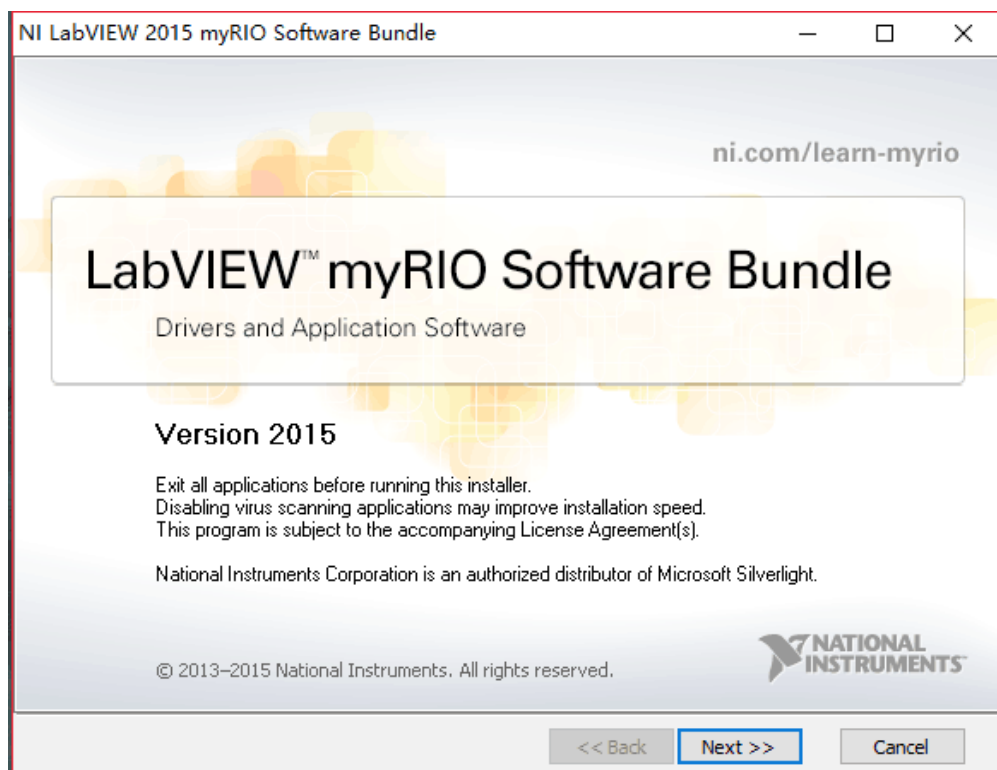
| | |
|--------------------------|----|
| 一、英文版软件的安装..... | 3 |
| 二、删除英文版 LabVIEW 软件..... | 11 |
| 三、中文版 LabVIEW 软件的安装..... | 12 |
| 四、软件注册..... | 18 |

一、英文版软件的安装

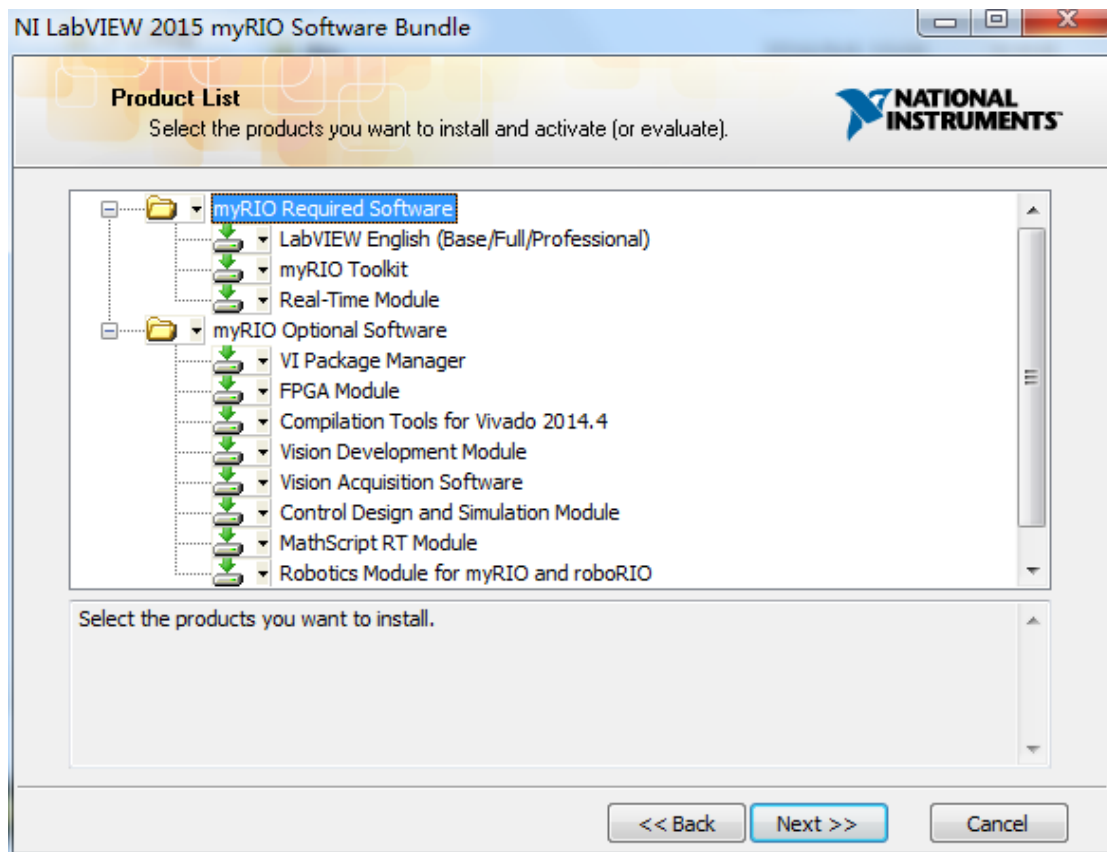
1. 找到电脑中软件安装包的位置 \labview\2-光盘资料\1，鼠标左键双击 setup.exe 开始安装；



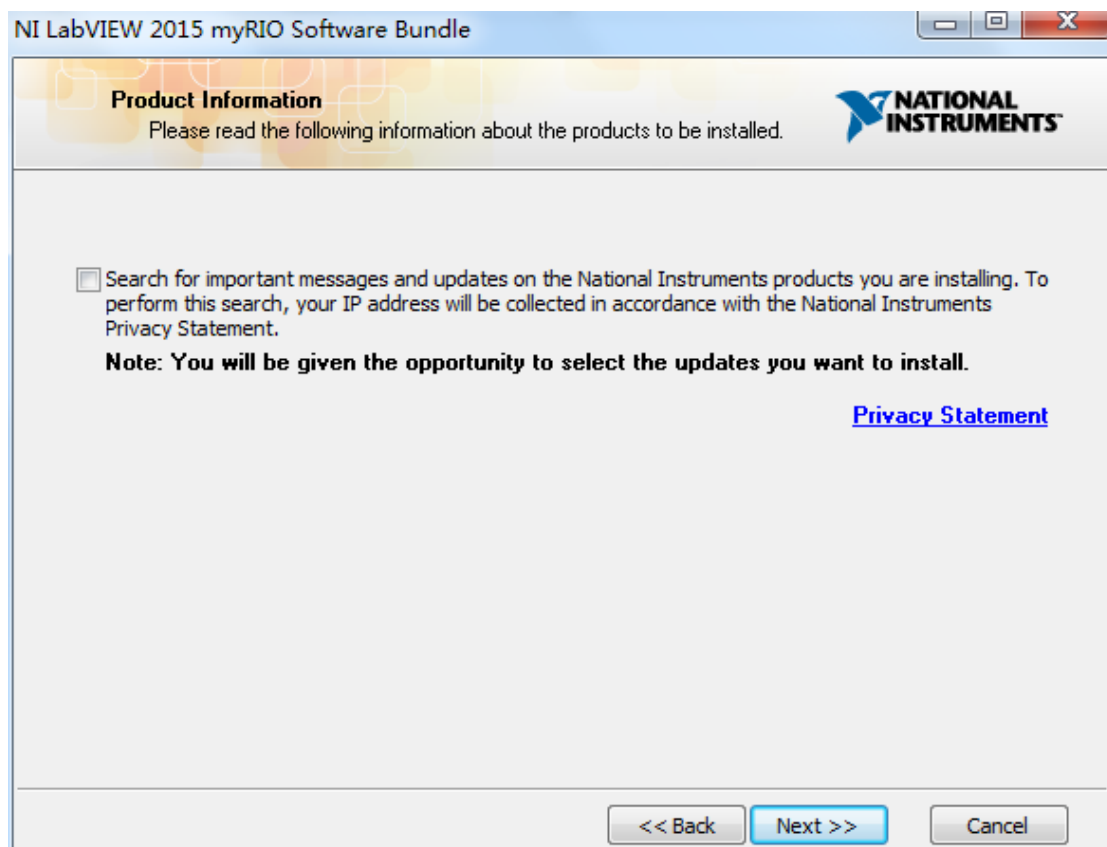
2. 点击 next;



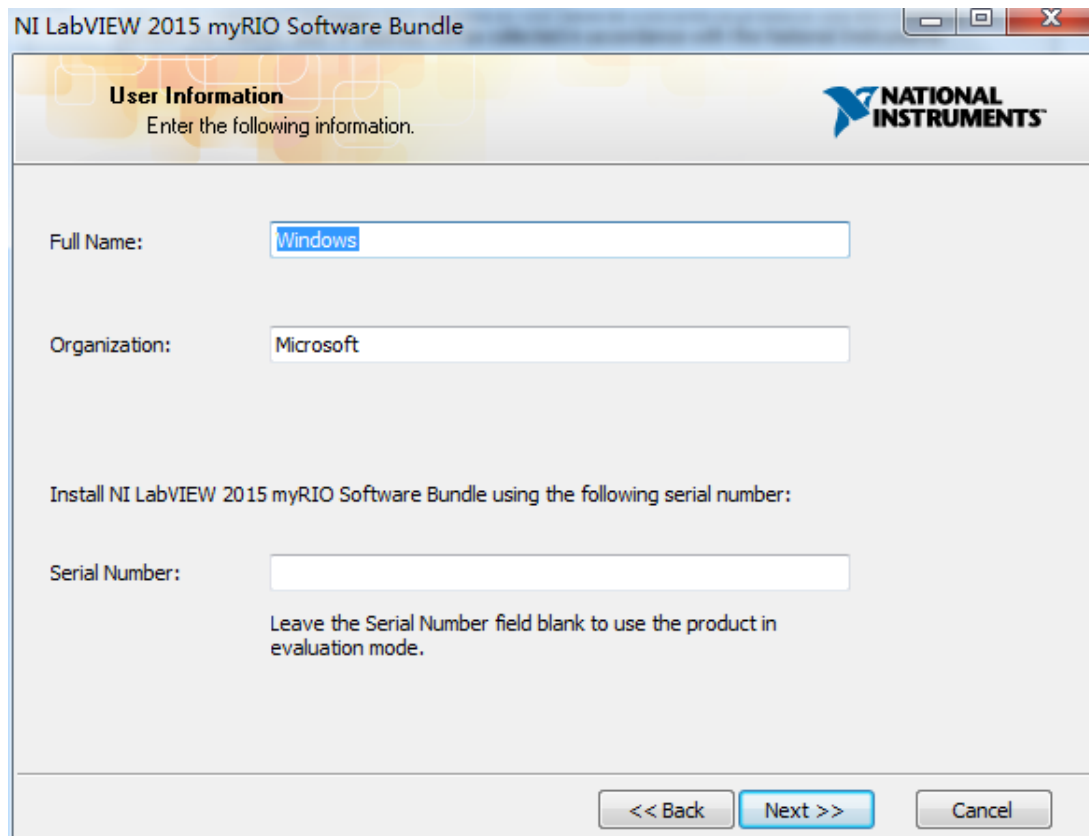
3. 点击鼠标左键，选择 install 全部勾选，勾选完成点击 next；



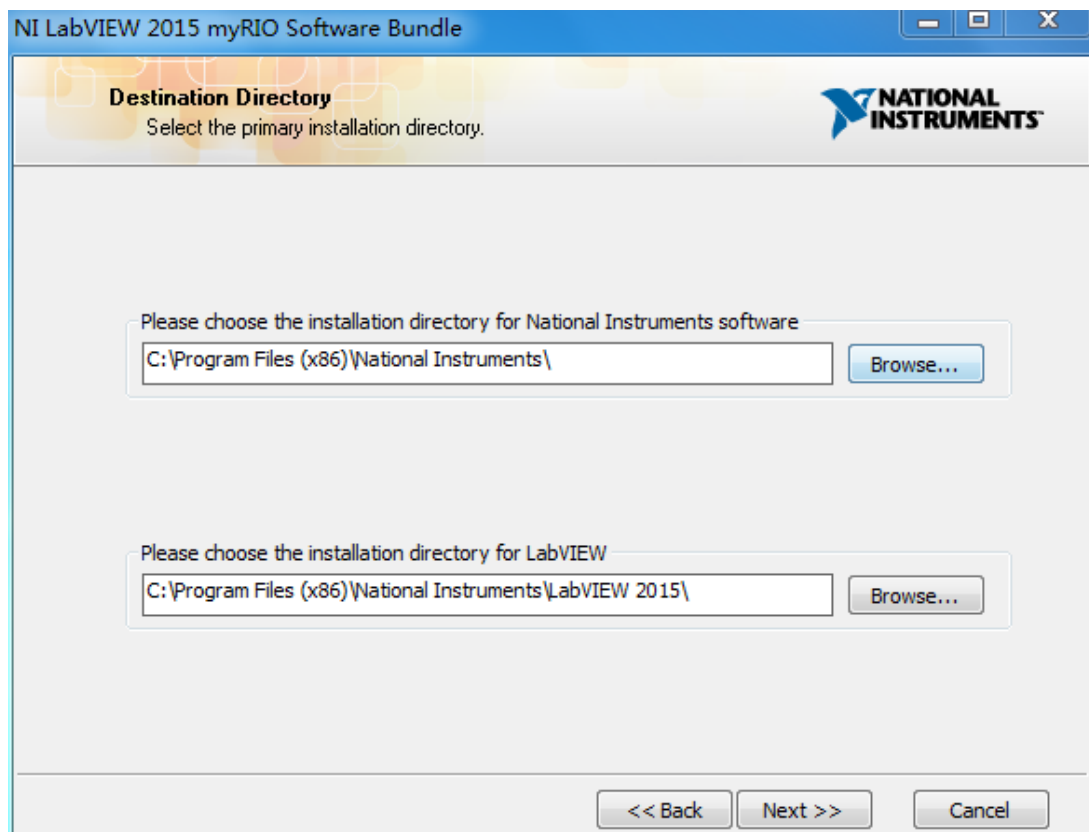
4. 取消勾选，点击 next；



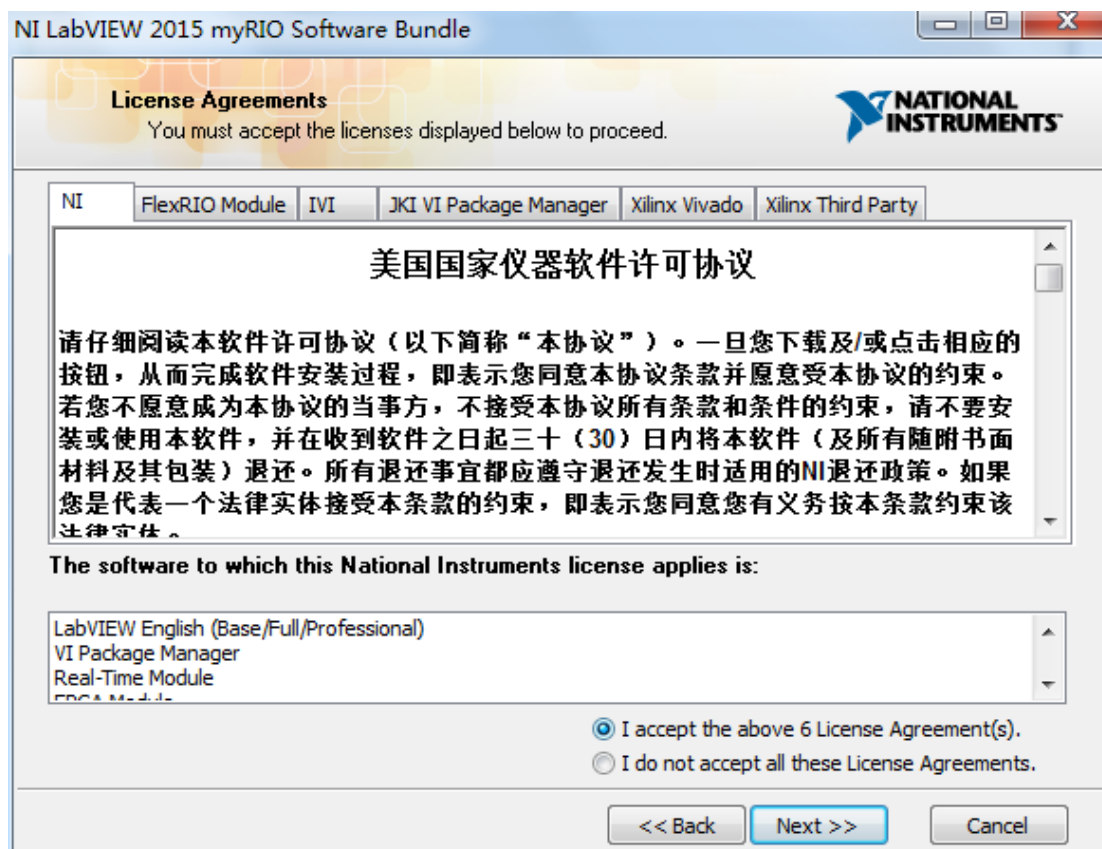
5. 点击 next;



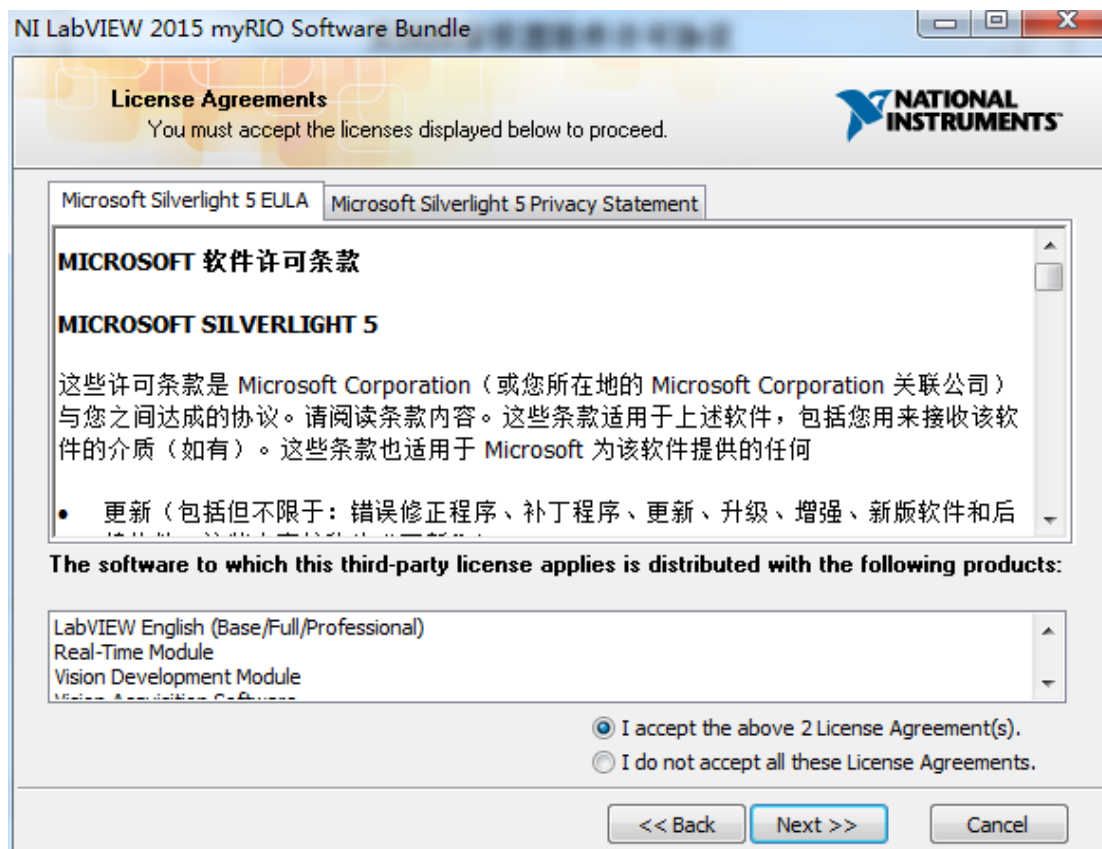
6. 选择安装路径（推荐安装在磁盘根目录下，注意后面的所有软件都安装在同一目录下）;



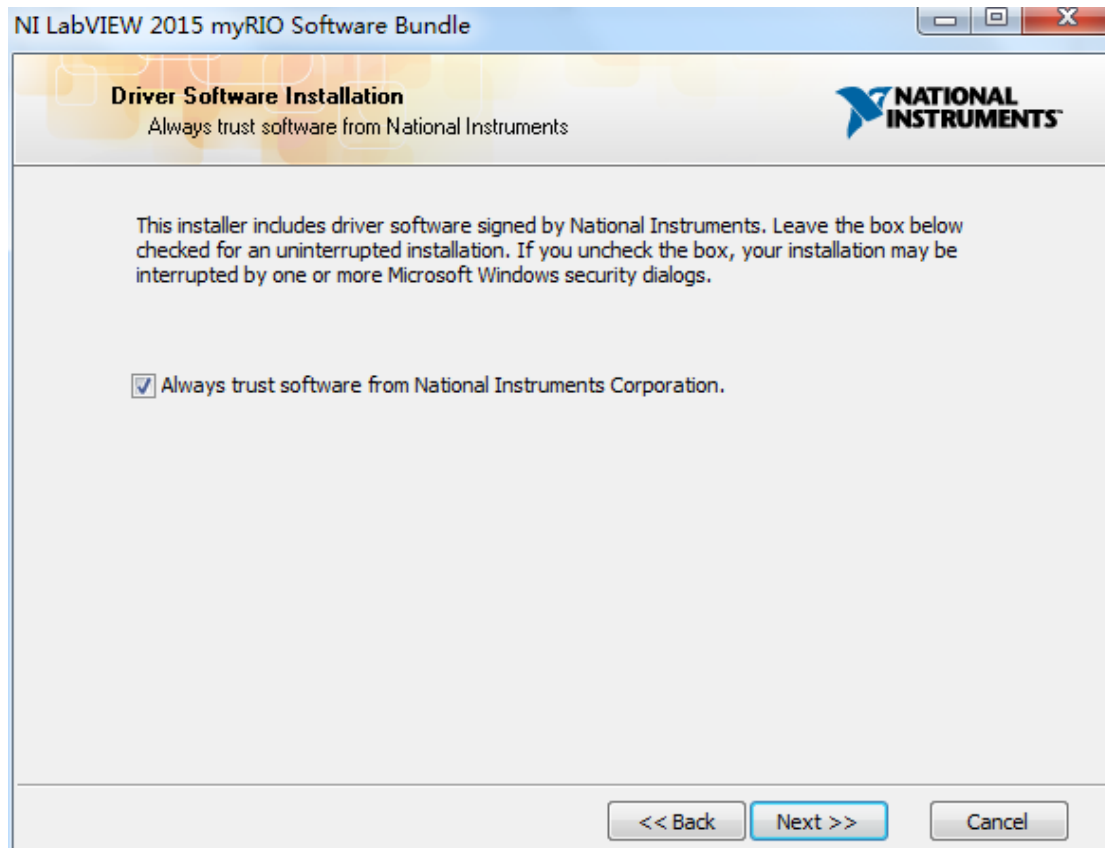
7. 选择接受，点击 next；



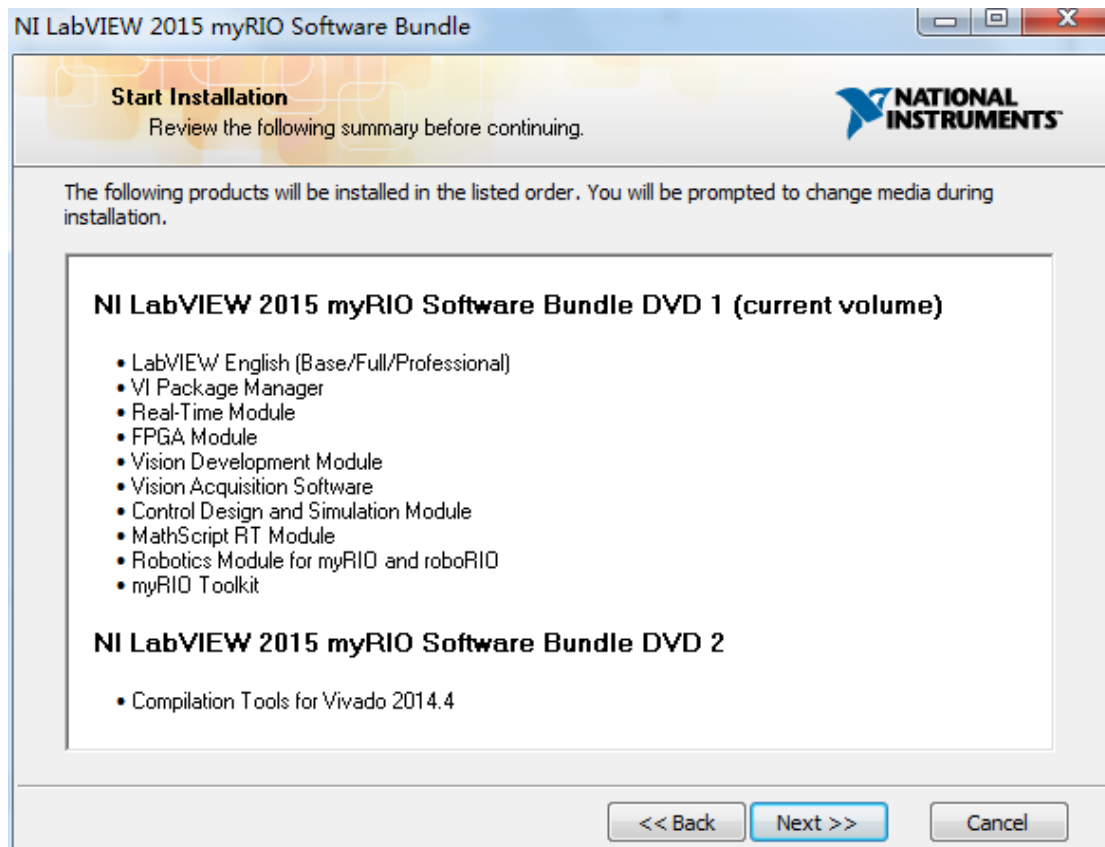
8. 选择接受，点击 next；



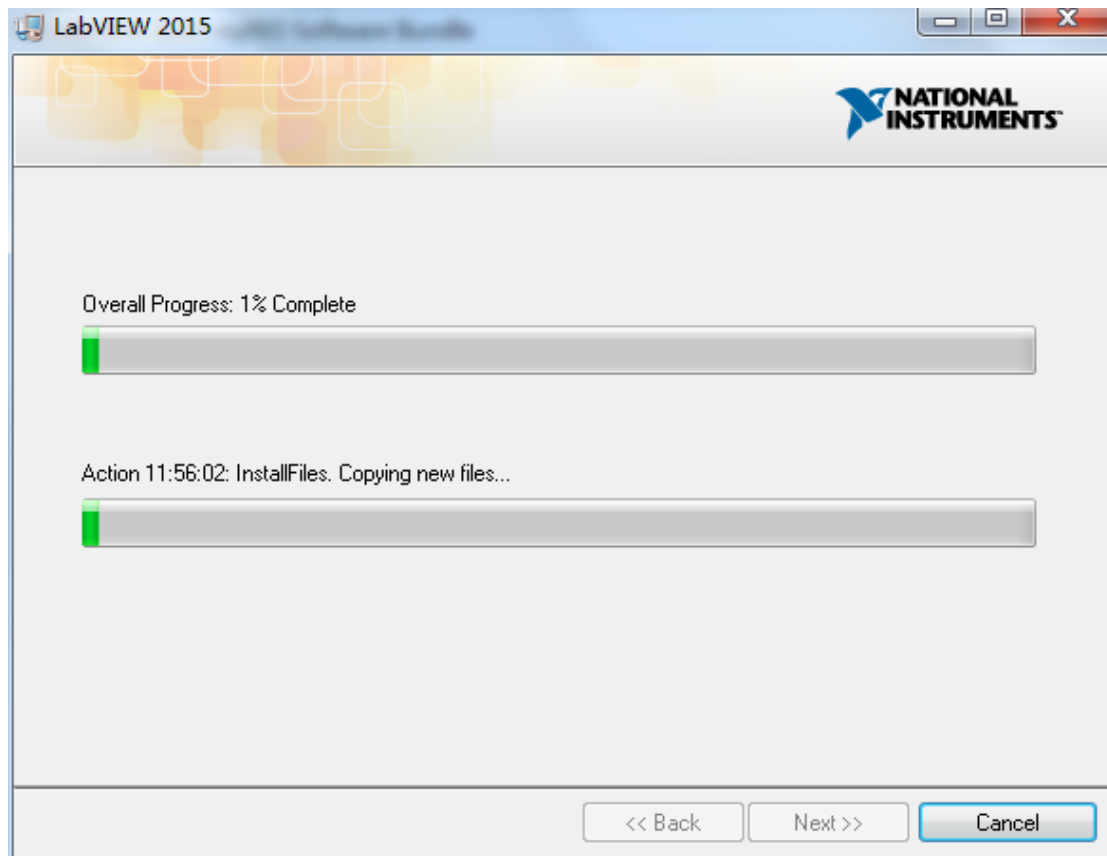
9. 点击 next;



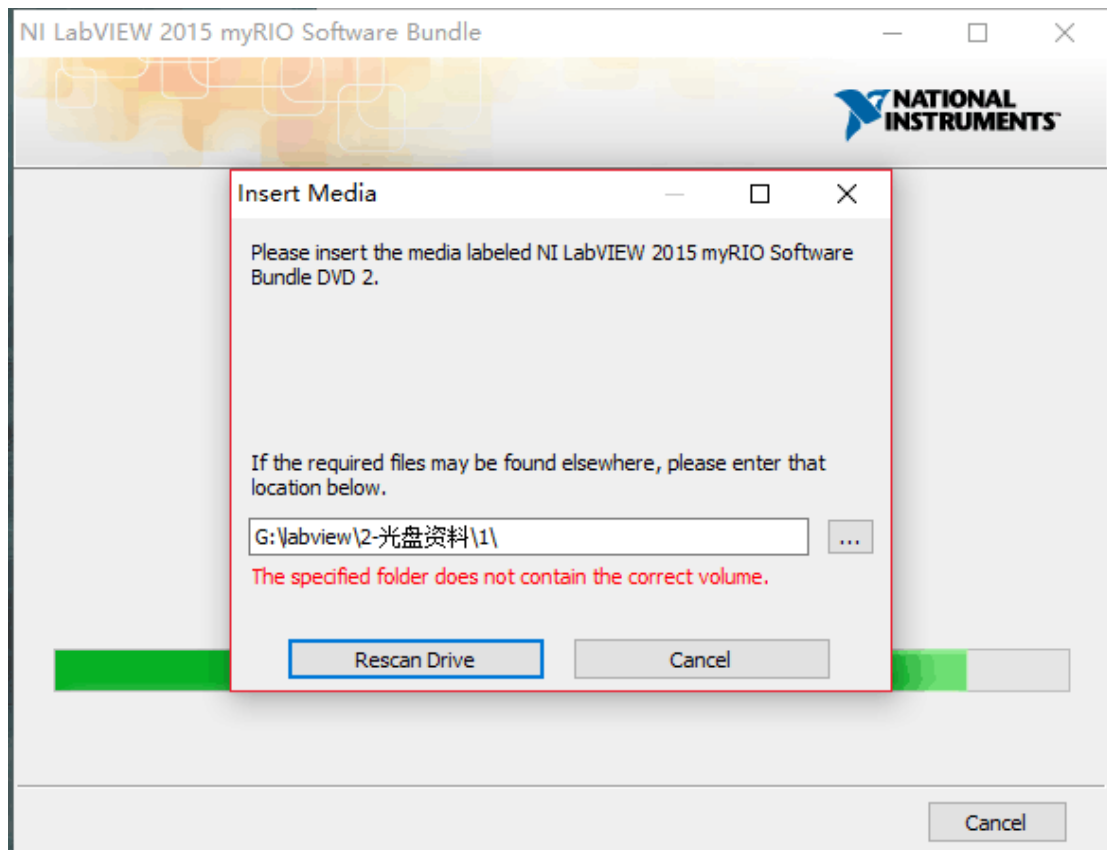
10. 点击 next;



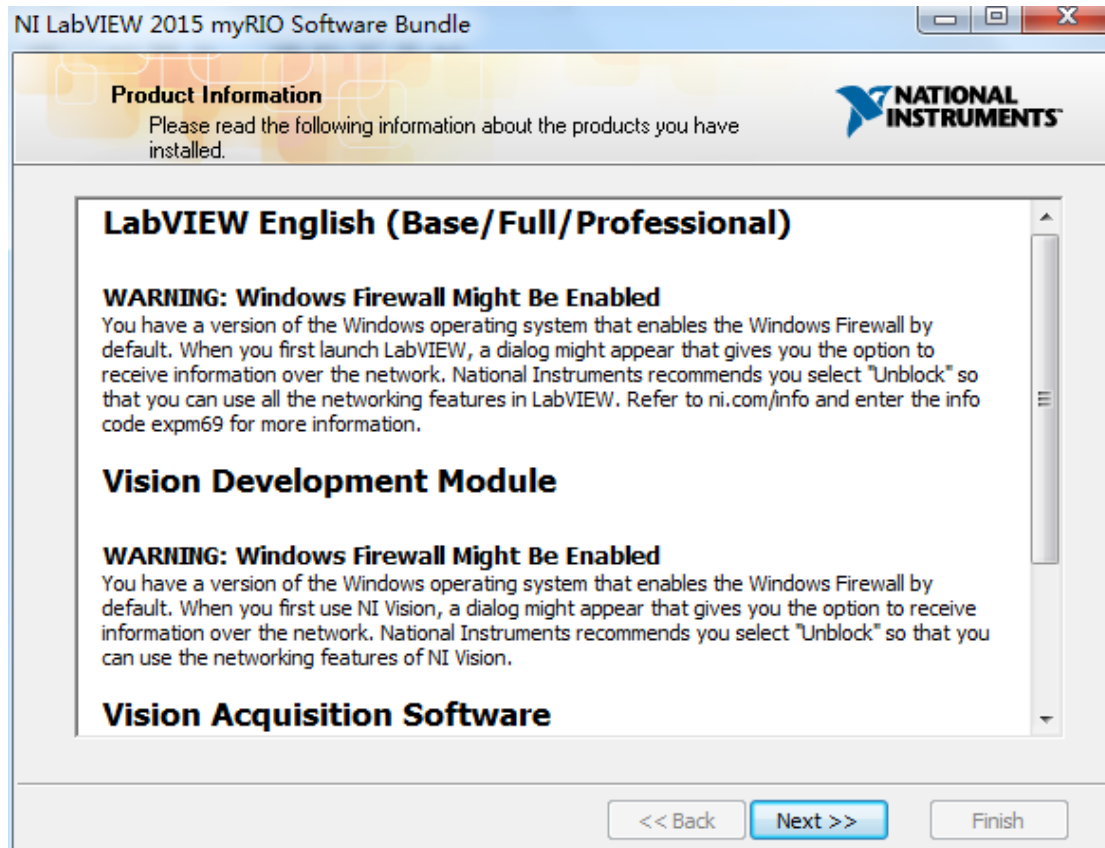
11. 等待安装完成，点击 next；



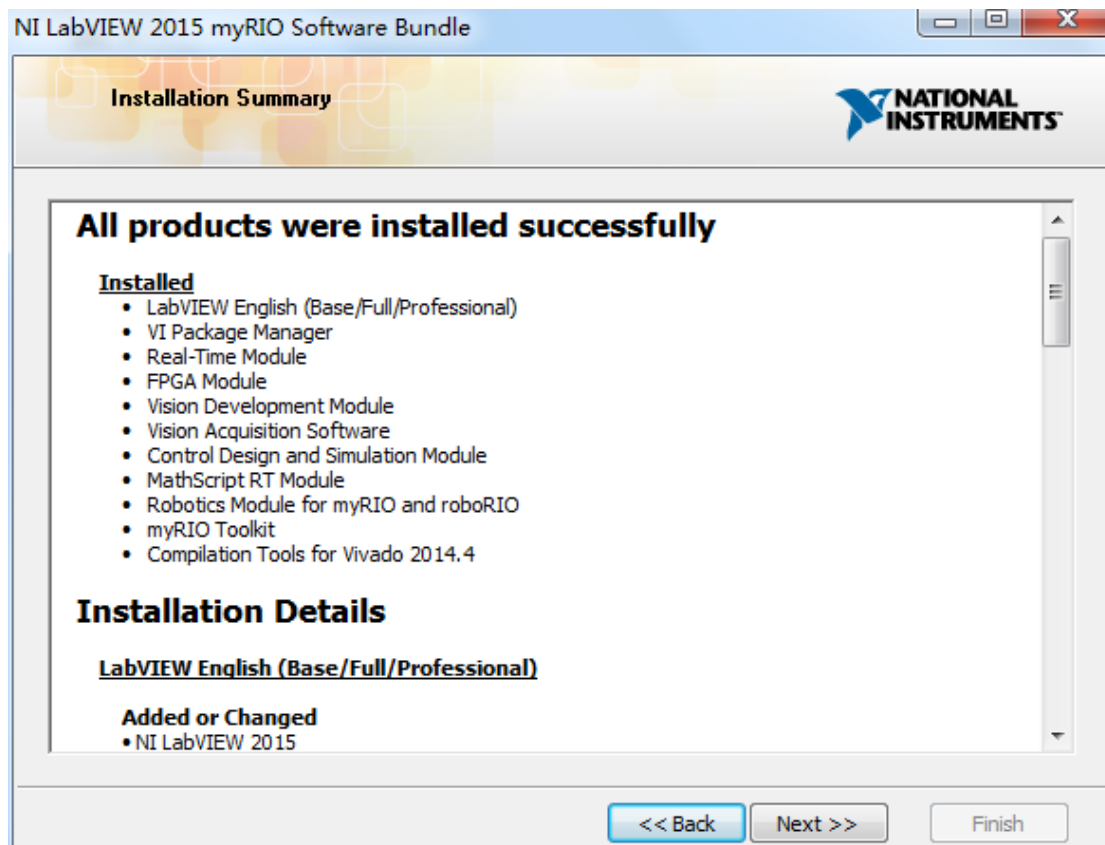
12. 在弹出选择光盘 2 的位置，选择 \labview\2-光盘资料\2 进行安装；



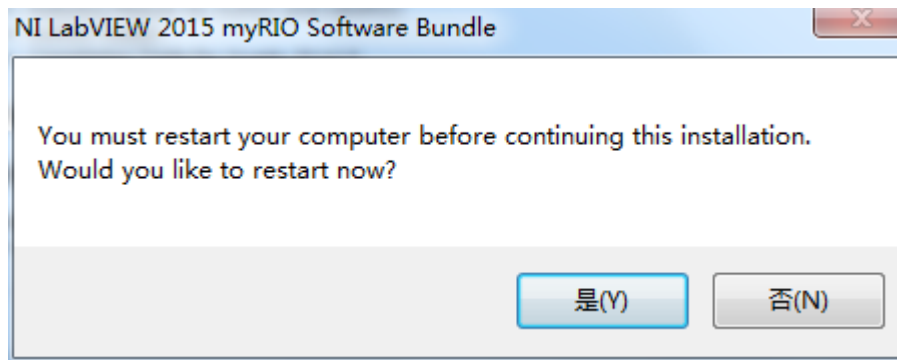
13. 点击 next;



14. 点击 next;

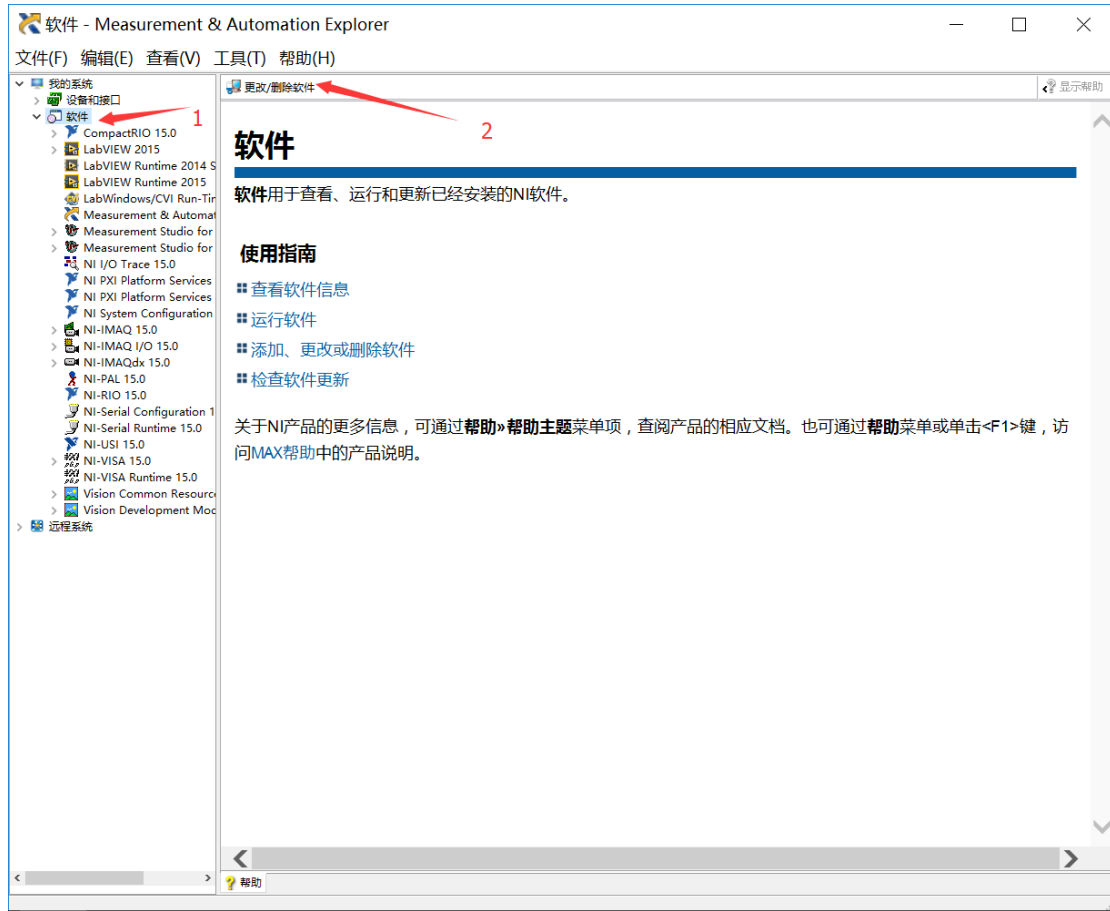


15. 选择 “是”，完成英文版软件的安装；

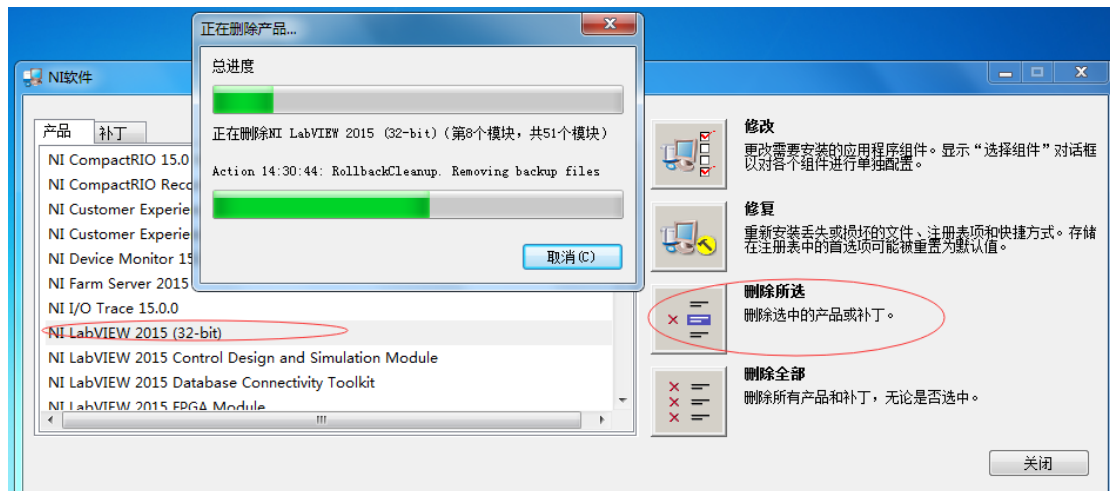


二、删除英文版 LabVIEW 软件

1. 打开 NI MAX 软件，在“我的系统”中点击“软件”，点击“更改/删除软件”；



2. 选择 NI labview2015 (32-bit) 删除所选, 等待软件删除完成;

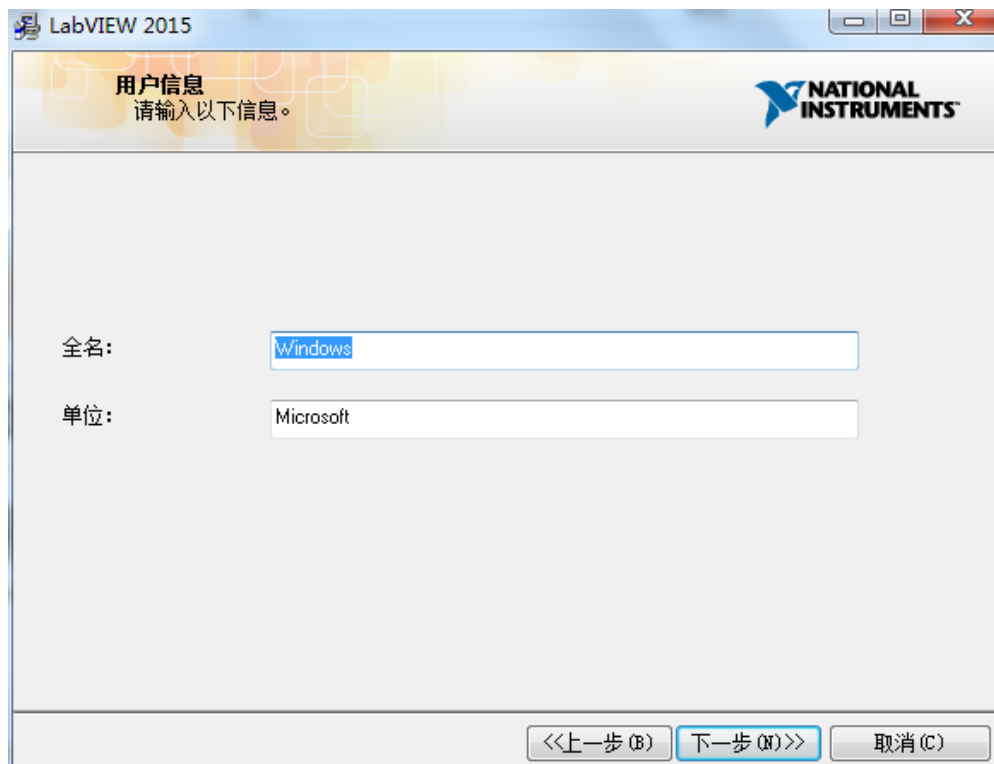


三、中文版 LabVIEW 软件的安装

1. 解压 LabVIEW 2015 -32 位中文版，点击 2015LV-WinChn.exe，进行安装，点击 next；



2. 点击 next；



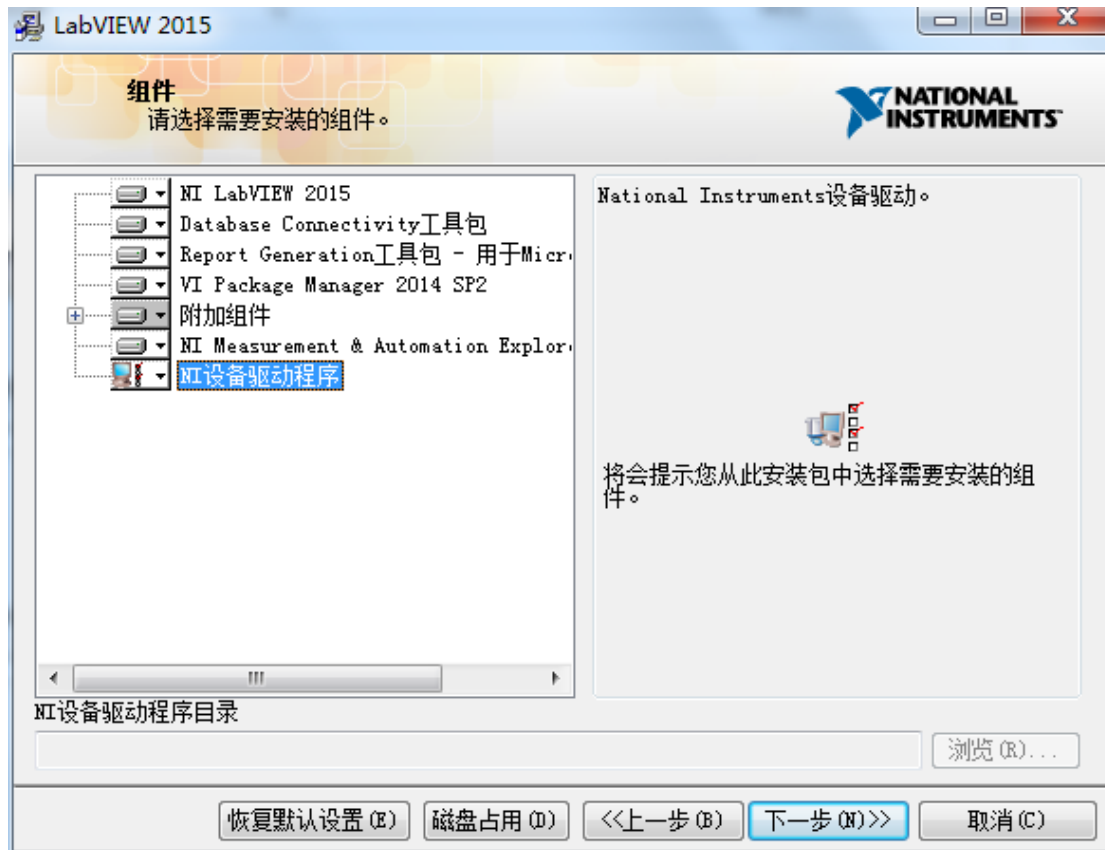
3. 点击 next;



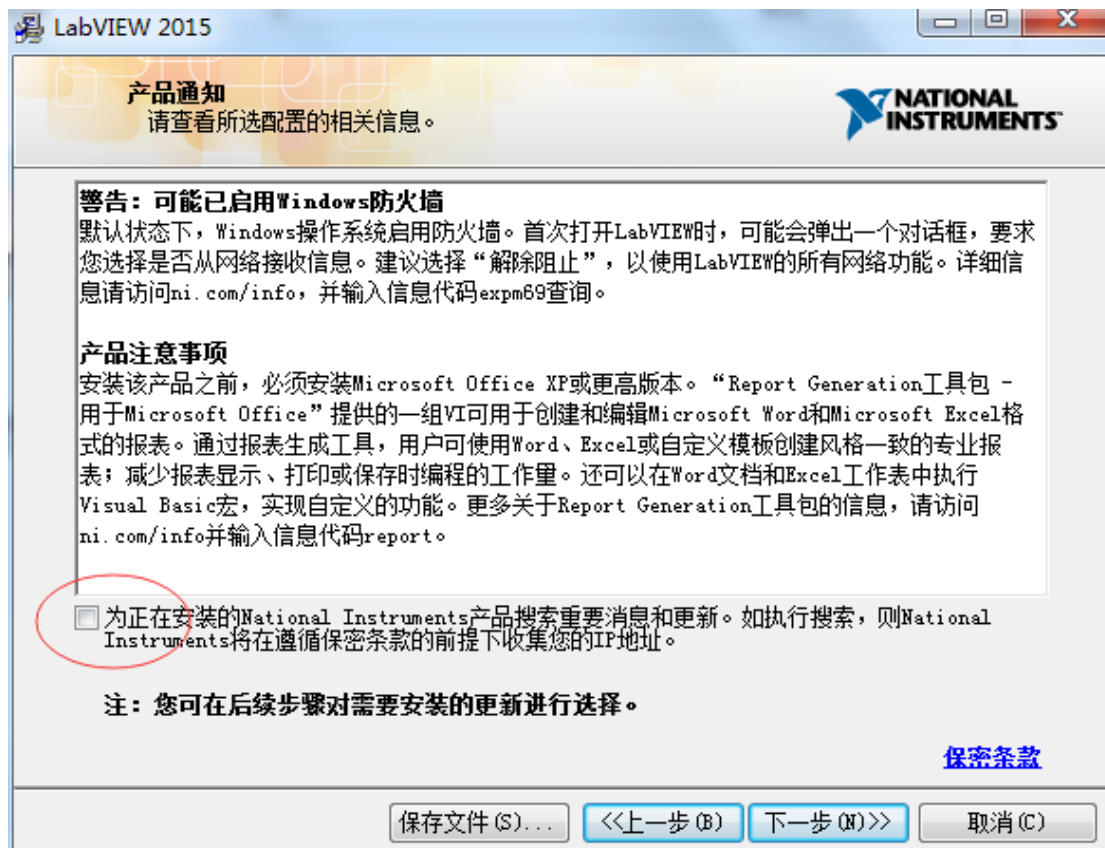
4. 点击 next;



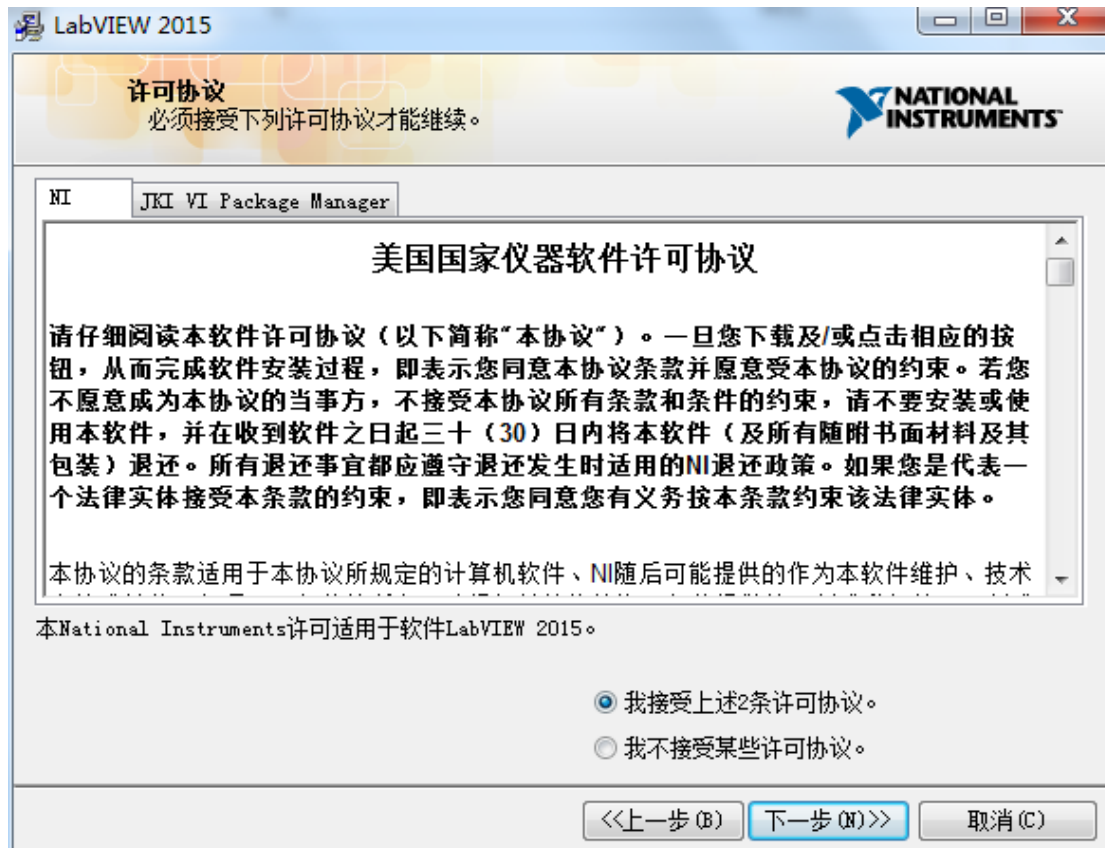
5. 点击 next;



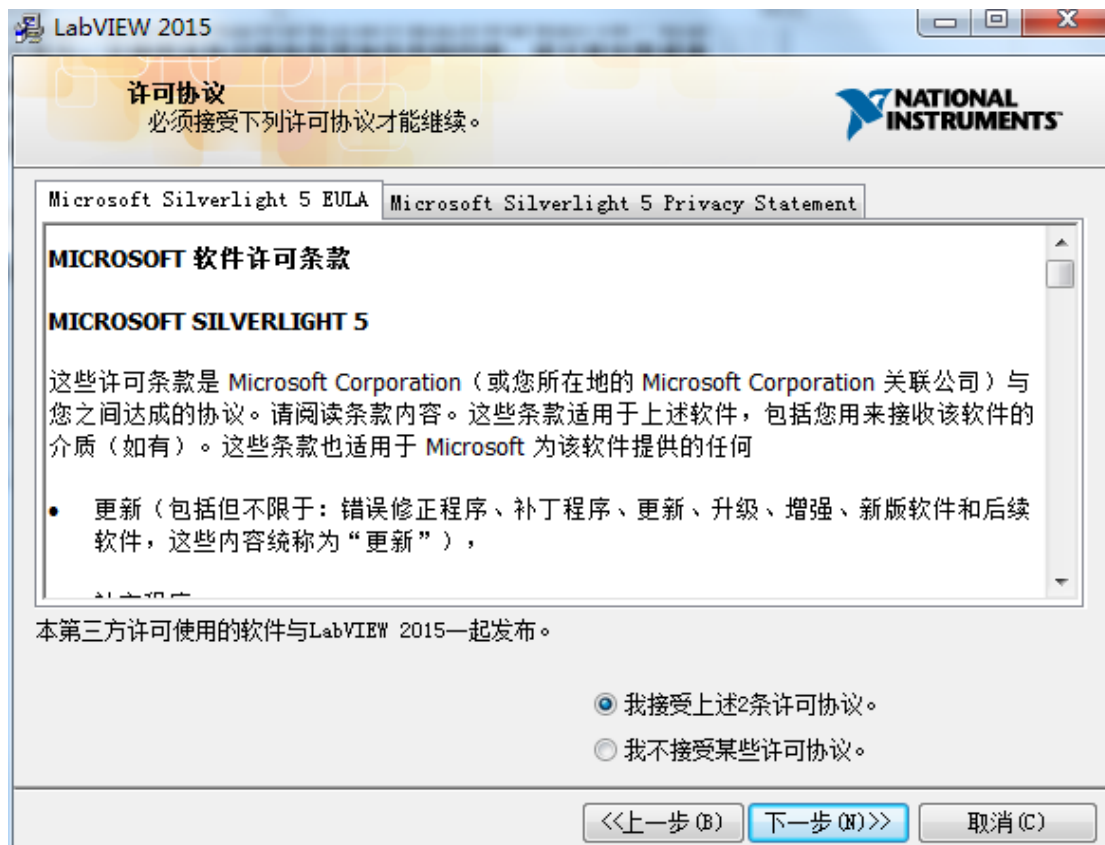
6. 取消勾选框，并点击 next;



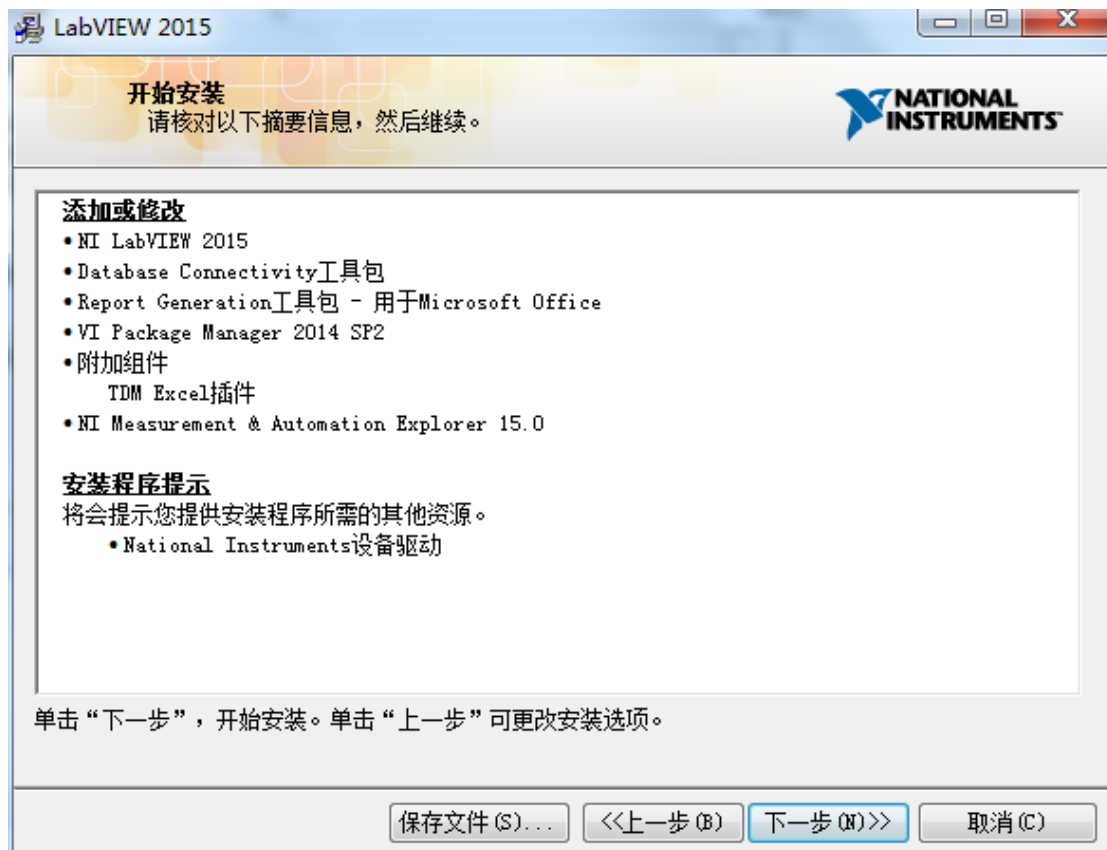
7. 选择接受，点击 next；



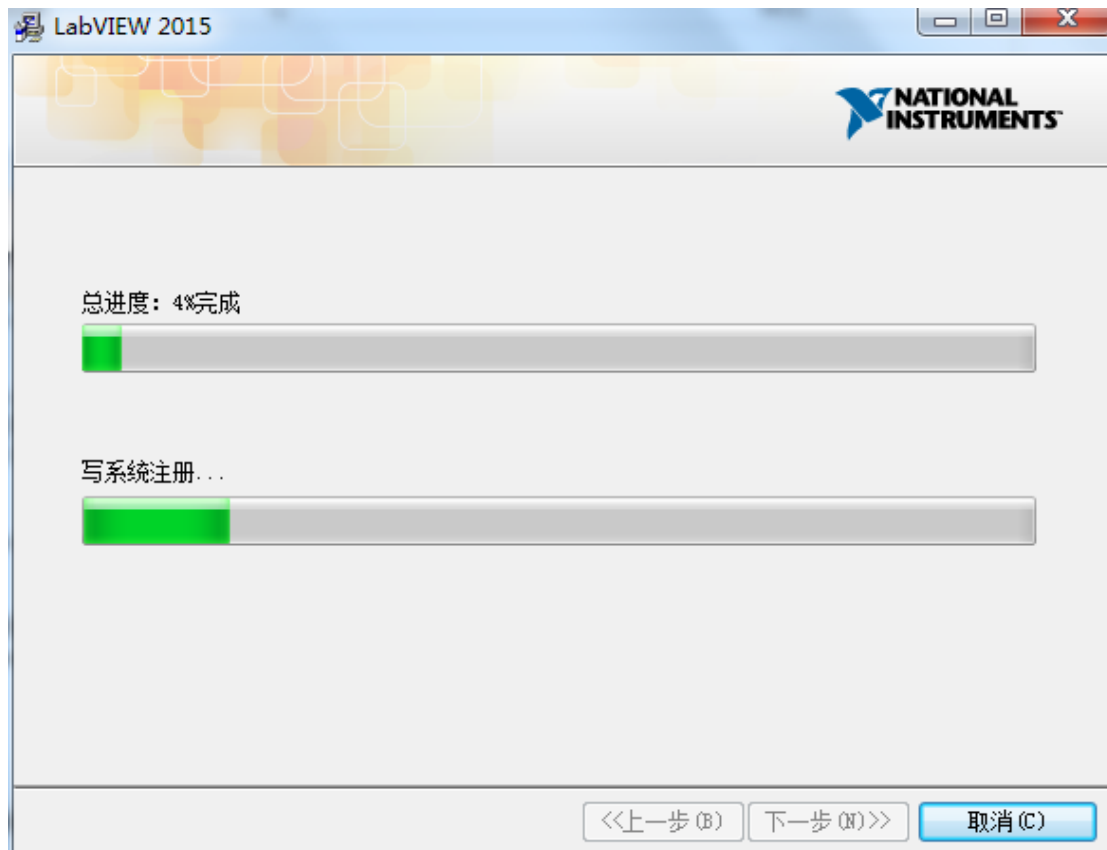
8. 选择接受，点击 next；



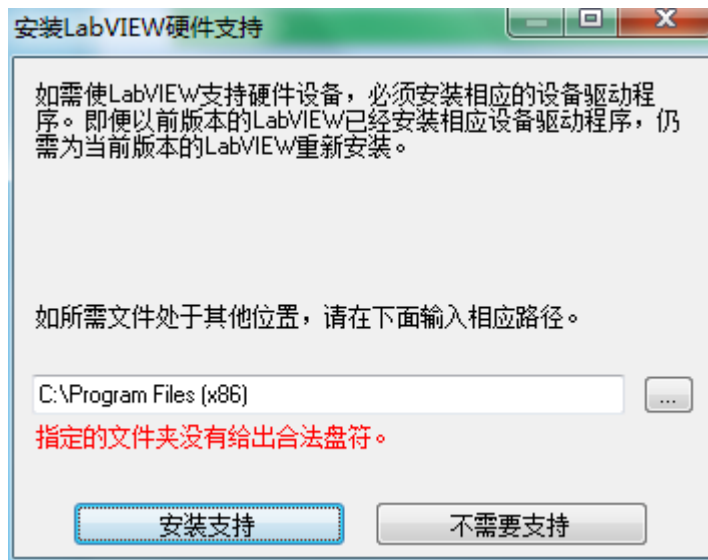
9. 点击 next;



10. 等待安装完成，点击 next;



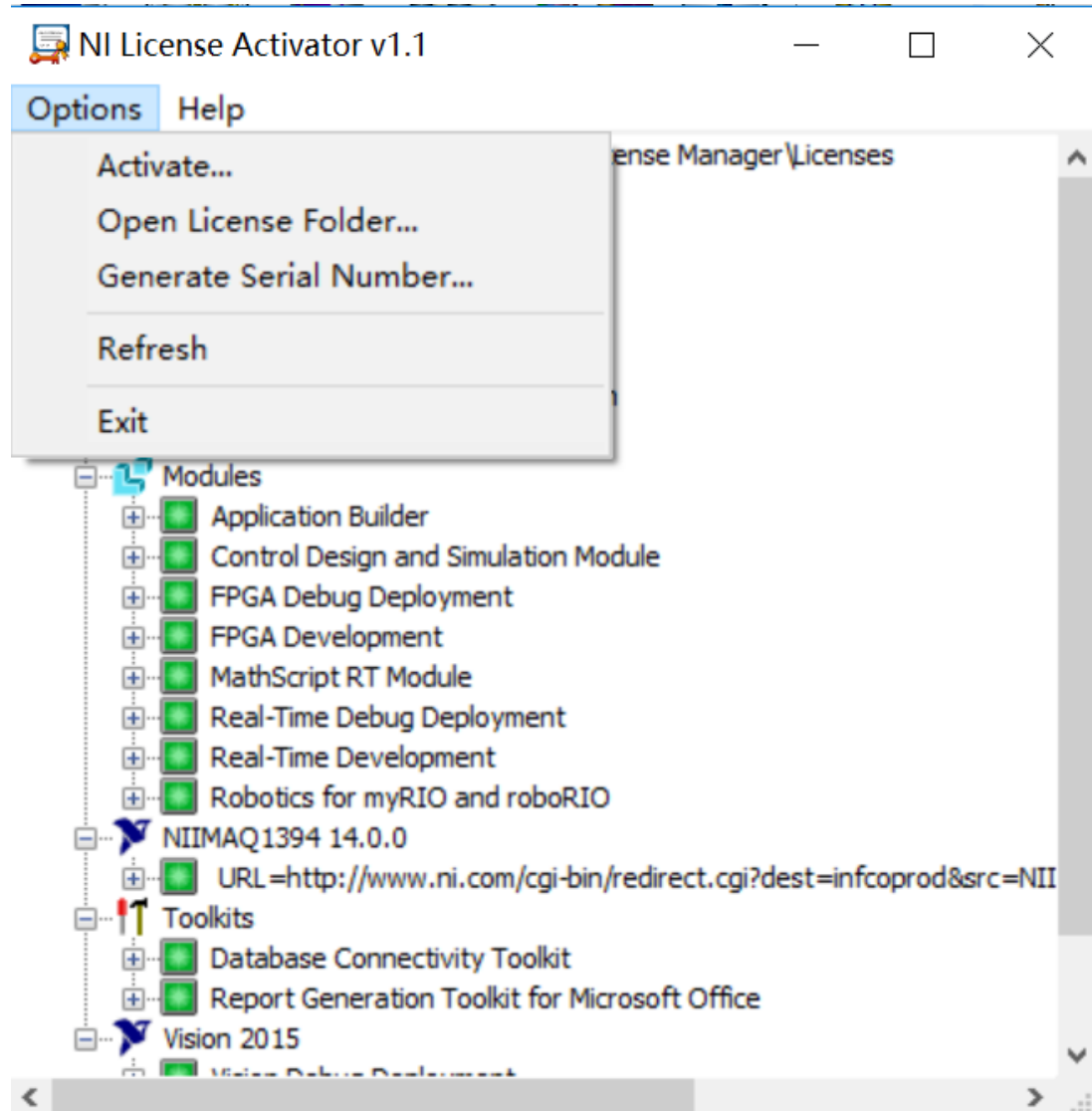
11. 选择不需要支持；完成安装；



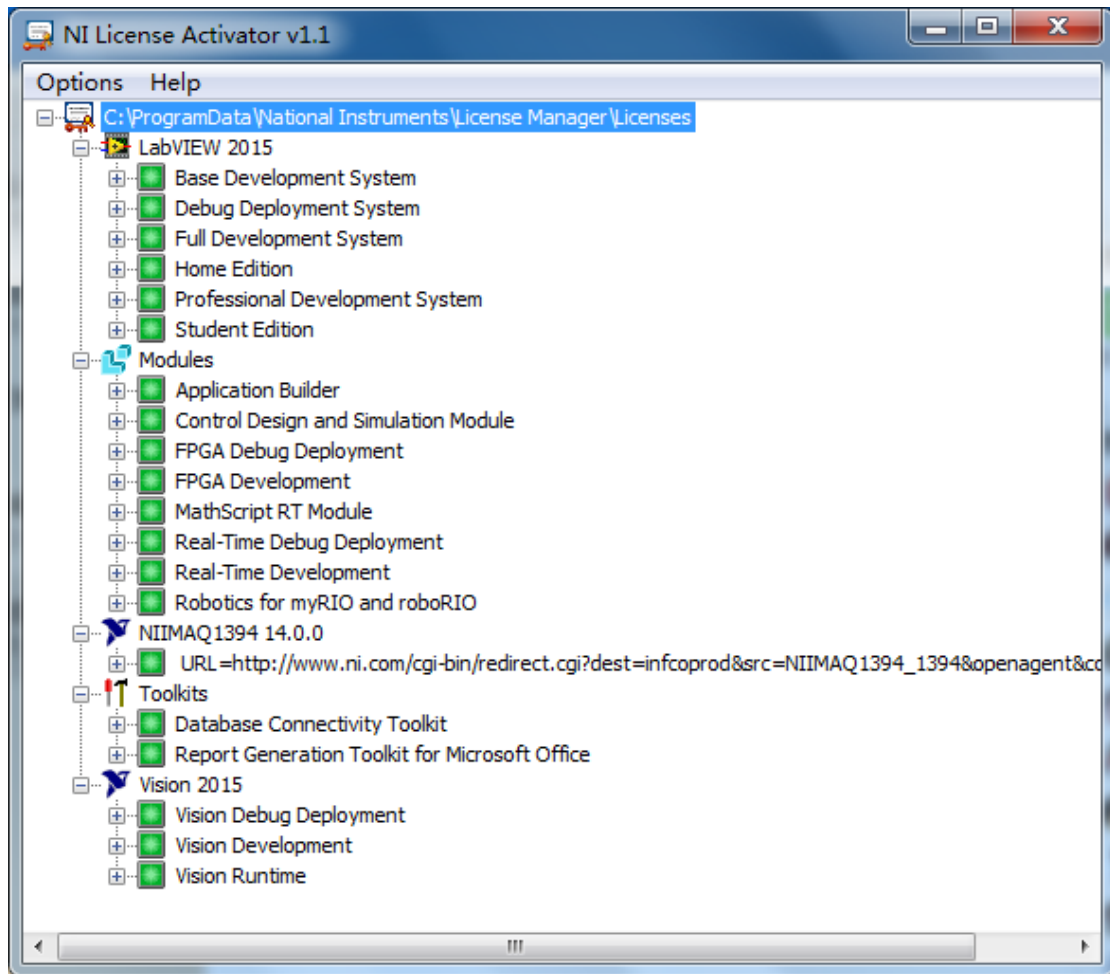
;

四、软件注册

1. 注册，点击“Option”，选择“Activate”；



2. 全部变绿，注册成功；





天津博诺智创机器人技术有限公司

Tianjin Bonuo Intelligent Creative Robotics Technology Co., Ltd.

网址: <http://www.bnrob.com>

邮箱: bnrobot@126.com

邮编: 300353

销售热线: 18920602876

服务热线: 18920635286

地址: 天津市津南区北闸口示范镇天乐创新产业园 2 号楼

